

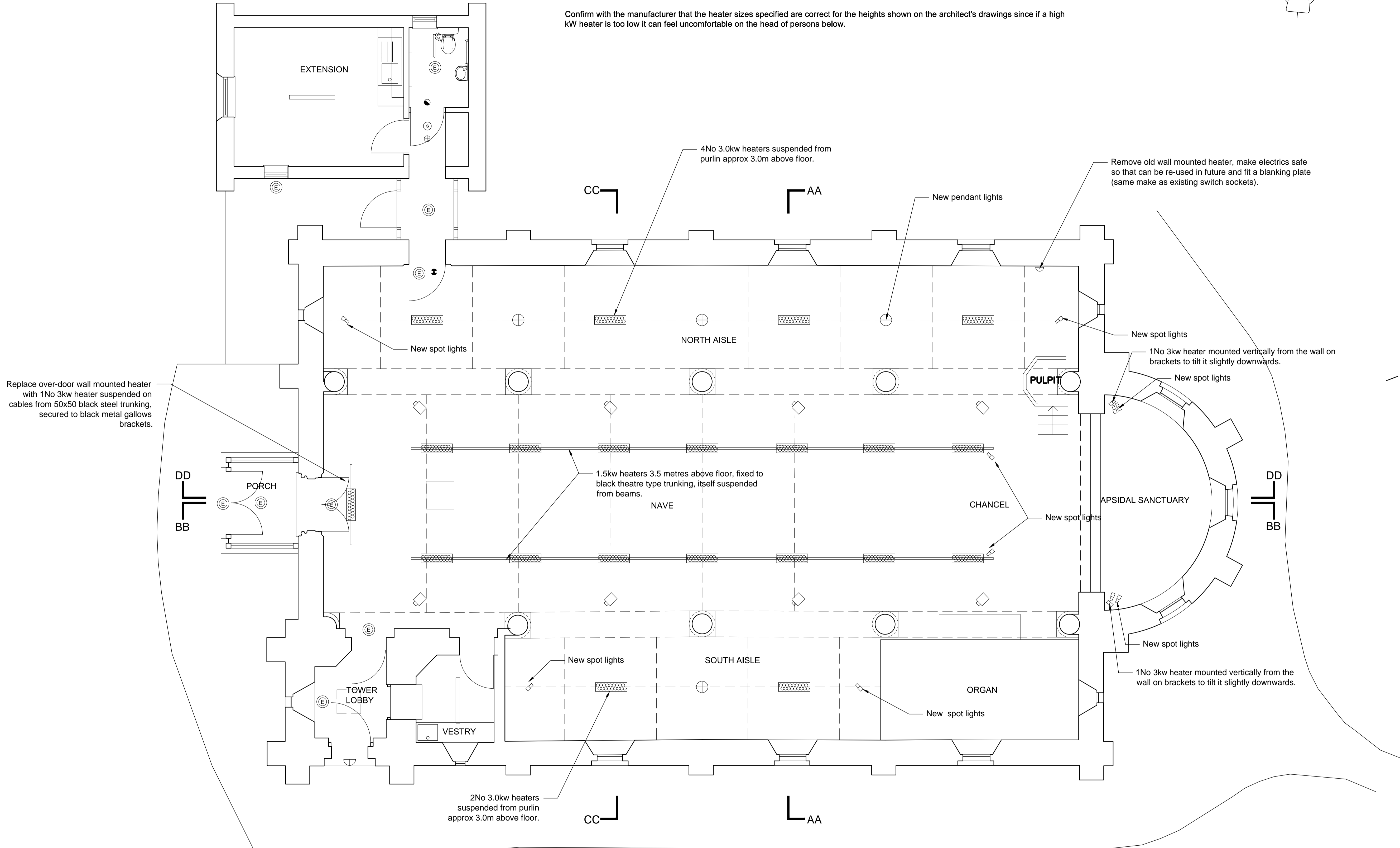
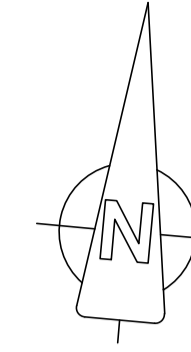
HEATER INSTALLATION / MANAGEMENT

1. infra-red heating is not to increase and maintain a nice ambient air temperature. Infrared heating is radiant and we will feel the direct benefit from it without the air temperature increasing dramatically. The controls should simply be on / off, allowing for as many heaters to be operated individually as is practical. It also should allow for at least a few heaters to operate on a frost thermostat.

2. Wiring to heaters is along a very similar route to the existing surface mounted (and painted in with walls) cables. These, providing a check shows them to be adequate and in good condition, can be re-used and added to, then painted again by employer working as an Artist & Tradesman using contractor's scaffold upon completion. For the cables running along roof timbers, black cables should be used. For cables running down to the radiant cassettes, black flexible cable is to be used.

4. The specified heaters are recommended by the manufacturer to be suspended between 2.5m to 3.0metres. The contractor is to allow sufficient cable lengths but an experiment is to be carried out as early as possible to check if the central nave heaters could be higher and still effective. The central nave / chancel heaters have been shown at 3.5 metres height.

Confirm with the manufacturer that the heater sizes specified are correct for the heights shown on the architect's drawings since if a high kW heater is too low it can feel uncomfortable on the head of persons below.



Notes :

EXISTING LIGHTS ETC

- HALOGEN SPOT LIGHTS
- FLUORESCENT LUMINAIRE
- EXTERNAL WALL LIGHT
- MAINS OPERATED SMOKE DETECTOR WITH BATTERY BACKUP
- EMERGENCY LIGHT to replace and add to standard light fittings. With battery back up activated if power goes off.
- STROBE LIGHT to be activated if power goes off
- DISABLED WC ALARM flashing light outside the toilet door operated by pull chord in the toilet

NEW LIGHTS ETC.

- CEILING PENDANT LIGHT**
Anglepoise Original 1227 Brass
Maxi Pendant - deep slate colour.
Shade diameter: 29cm
- Shade height: 30cm
- Cable length: 250cm will need reducing to provide approx 1.5m floor to light fitting.
- Ceiling rose diameter: 10cm
Fit warm colour LED bulbs - wattage to be agreed - 21w max.
- SPOT LIGHTS** - black colour
Gridspot LED Anti Glare, T434038-BL-DL-830

INFRARED RADIANT HEATER

- BLANKING PLATE** for electrics presently redundant
- WIRELESS CONNECTION** from heaters to thermostat controls
- DOUBLE BRASS FLOOR SOCKET OUTLET** (with flap lids) to be set in holy table top - for a reading light which is to be chosen.

Revision	Date	Description
G	15/08/18	Amendments to comments
F	04/07/18	Re-arrange nave heaters + show specific spotlights to be used
E	12/06/18	Change heater type
D	30/05/17	Various amendments
C	03/11/16	New heating and lighting scheme
B	17/03/14	Omit floor trunking. Add flexible plastic conduit. Electric layout shown
A	28/05/13	Omit heating scheme

St Pauls Church
Staplers Road, Newport, Isle of Wight
SERVICES CEILING PLAN

DATE: 15/05/12 SCALE: 1/50@A1

DRAWING No.:	REV:
9011/305	G

HEATER TYPES
Tansun Monaco radiant heaters are to be installed, suspended on adjustable brass coloured chain or wire rope with brass clips to attach the electric cables. Each heater is to be supplied by an individual circuit and protected by a 16 amp RCBO. Thermostats are only to be provided for frost protection. Supply and install Horstmann controls that allow for full programming 7 days a week, 6 different times schedules per 24 hrs and also a 4 digit pin code to prevent anyone messing around with them once programmed.

READ IN CONJUNCTION WITH DRAWINGS 9011/302 & 303